

*Ludlow, Kentucky*







Welcome to  
*Ludlow*

{ THE HISTORY OF LUDLOW }

Ludlow, Kentucky is located in northern Kenton County on the Ohio River. The city is bordered by Covington to the east, Bromley to the west and Fort Wright to the south. Elmwood Hall, the first permanent residence in the city, was constructed in 1818. In 1830, Elmwood Hall and most of the present day city was purchased by Israel Ludlow. It was Ludlow who plotted the first streets and lots in 1846. The new village became popular with wealthy Cincinnati businessmen. These Cincinnatians constructed numerous large residences in the town, many of which still stand today.





Discover  
*Ludlow*

{ LUDLOW KENTUCKY }

The City of Ludlow, Kentucky is located along the Ohio River in Northern Kentucky. Incorporated in 1864, Ludlow covers approximately two square miles. Minutes from downtown Cincinnati, Ludlow lies at the heart of the tri-state area. Residents and guests enjoy the promise a quaint and friendly community while taking pleasure in accessibility to all the local attractions and entertainment Northern Kentucky has to offer.



# Living in *Ludlow*

## { OUR COMMUNITY }

Ludlow has 5,000 friendly residents with 250 new condos. It is an unpretentious lifestyle with a redeveloping downtown streetscape, a new skateboard park, and views of the Ohio River. Ludlow offers affordable housing with a highly-rated school district. Ludlow is located in an outstanding historic district dating to the early 19th century. Every year the community celebrates a Fireworks Festival and a family-friendly Christmas Parade. Ludlow is a compact, safe community where you can walk anywhere or enjoy a scenic bicycle ride along the Ohio River.

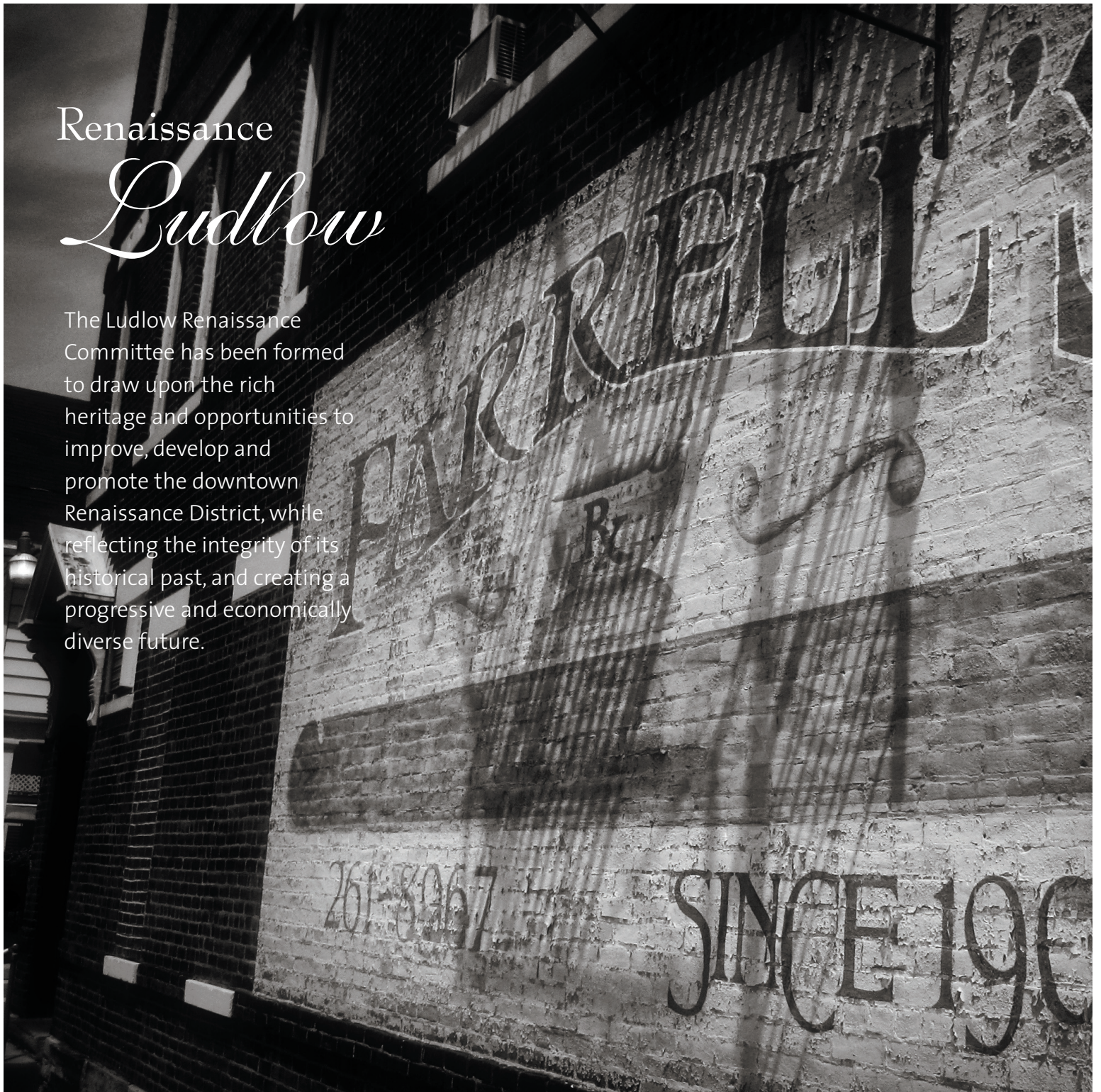




Renaissance

# Ludlow

The Ludlow Renaissance Committee has been formed to draw upon the rich heritage and opportunities to improve, develop and promote the downtown Renaissance District, while reflecting the integrity of its historical past, and creating a progressive and economically diverse future.





# Ludlow

## Notable Facts

Ludlow started as a piece of land that was given to Gen. Thomas Sandford in 1790 by the military for his service. Sandford later traded the land to Thomas D. Carneal for some land in what is present day Ft. Mitchell. It was Mr. Carneal who built Elmwood Hall in 1818. This was the first permanent residence ever to be built in Ludlow.

Carneal later sold the land to William Bullock. Bullock planned to build a Utopian retirement community named Hygeia. The community was designed by John Buonarotti Papworth. When the community failed Bullock sold the land to its final owner Isreal Ludlow in 1846.

Even though Ludlow purchased the land in 1846 it wasn't until February 20th 1864 the Commonwealth of Kentucky chartered the City of Ludlow. Many residents, especially German and Irish immigrants, were attracted to Ludlow due to its ample supply of railroad jobs.

By 1950 Ludlow's population had swelled to 6,374 people. The population began to decline in the late 1960's and by the early 1980's the population had stabilized at 4,500 people, where it remains today.

The Lagoon Amusement Park was one of the Greater Cincinnati area's major recreational centers from 1895-1920. The park covered the area from present day Lake Street to present day Deverill Street. The park boasted a large man made lake, a large clubhouse which offered beautiful sweeping views of the lake, the Lagoon dance pavilion, a \$10,000 merry-go-round, a 100' Ferris Wheel, a roller coaster over the lake, a replica goldmine, and elevated automobile ride, a circle swing, etc. The park featured a Japanese Fair that included an authentic teahouse and small exhibit space. Four events between 1913 and 1920 lead to the closing of the park. A flood in 1913 damaged many of the Lagoon's attractions, a large investment was necessary to repair the facilities. In the same year a large 8,000 seat car racetrack was built in the park. It was in July 1913 that a serious wreck killed 9 and injured hundreds more. In July 1915 a tornado struck the town it caused \$20,000 worth of damage to the park. The same tornado also hit St. Boniface church. Finally the First World War spelled the end for the park. After the 1918 season the park closed its doors for the last time.

The land was used to build residential communities, an incinerator, and a refuse dump. In 1967 the rest of the land was sold to Ludlow Development Enterprises Inc. for \$28,000.

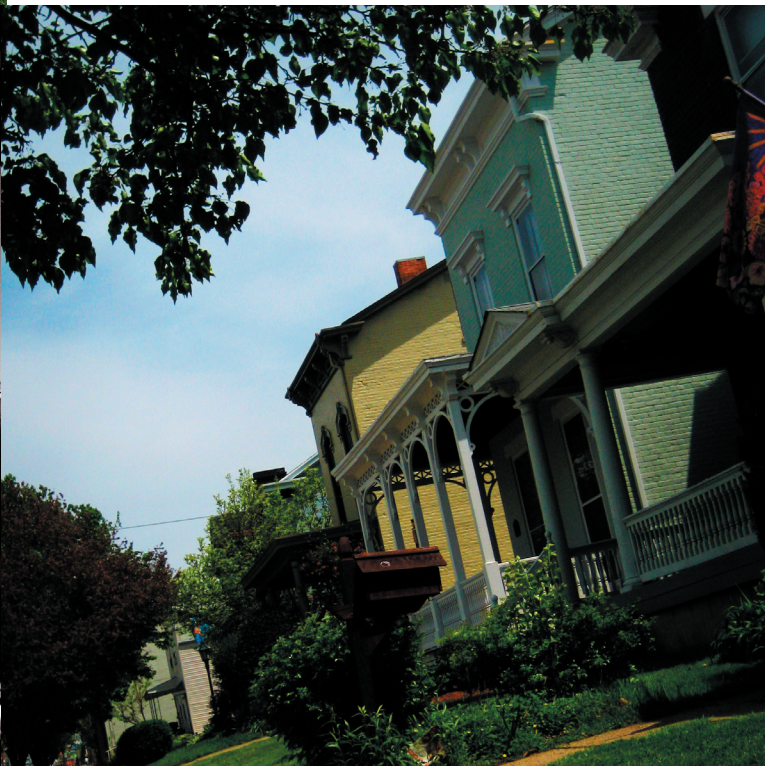
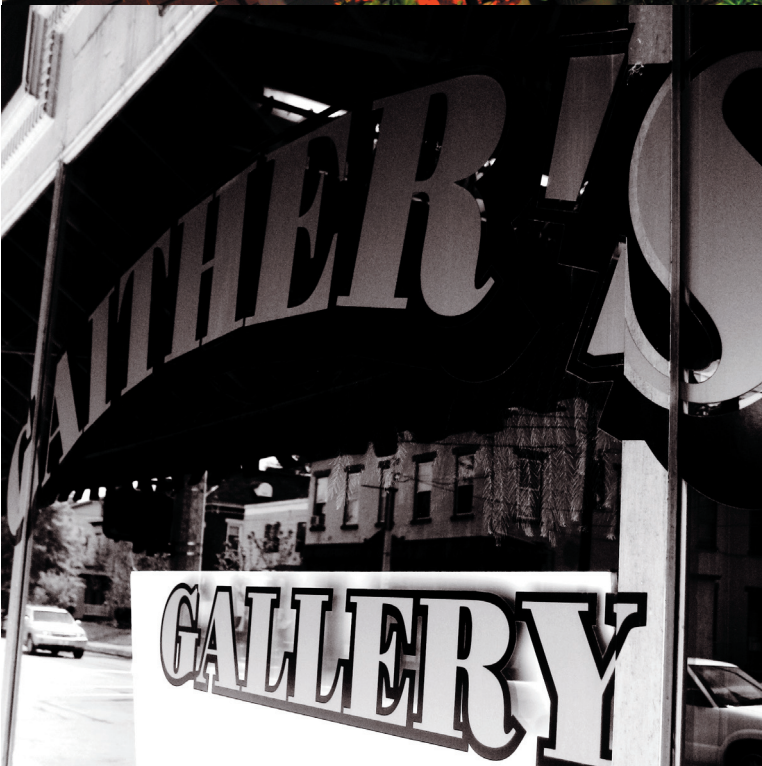




Experience

# Ludlow

Minutes from downtown Cincinnati, Ludlow lies at the heart of the tri-state area. Residents and guests enjoy the promise of quaint and friendly communities while taking pleasure in accessibility to all the local attractions and entertainment Northern Kentucky has to offer.







Inquire About  
*Ludlow*

Interested in finding out more about Ludlow?  
Visit our city website at [www.ludlow.org](http://www.ludlow.org)  
or contact Brian Dehner at **859-491-1233**.